

# PARTS LIST

BRUSHCUTTER

**PB6310**

Art# 024248

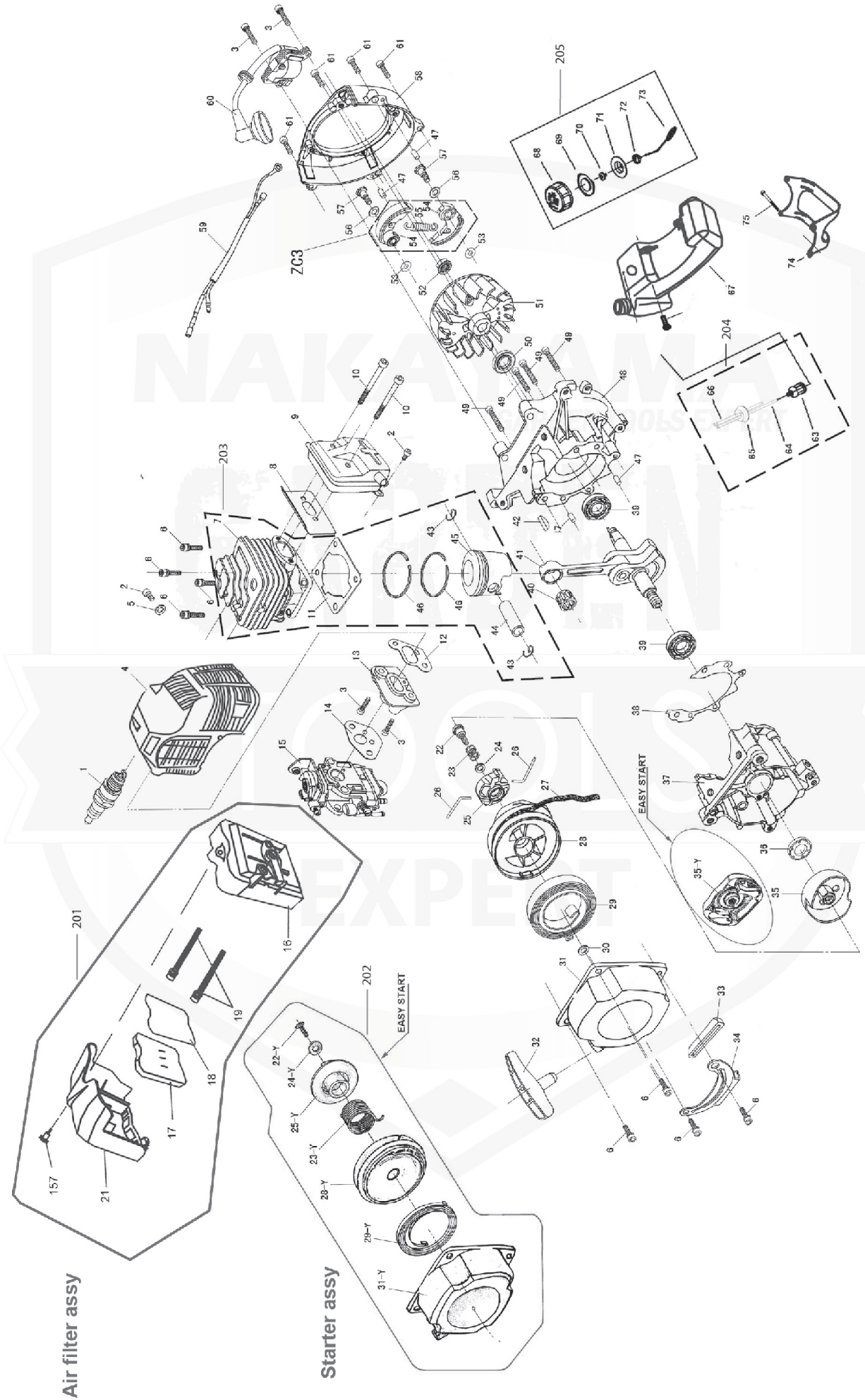


Use only NAKAYAMA genuine parts as specified in the parts list for repair or replacement.  
Check if your machine meets the applicable models listed below.  
The contents described in the parts list may change due to improvement.



**APPLICABLE:** PB6310 V19-1  
PB6310 V20-1

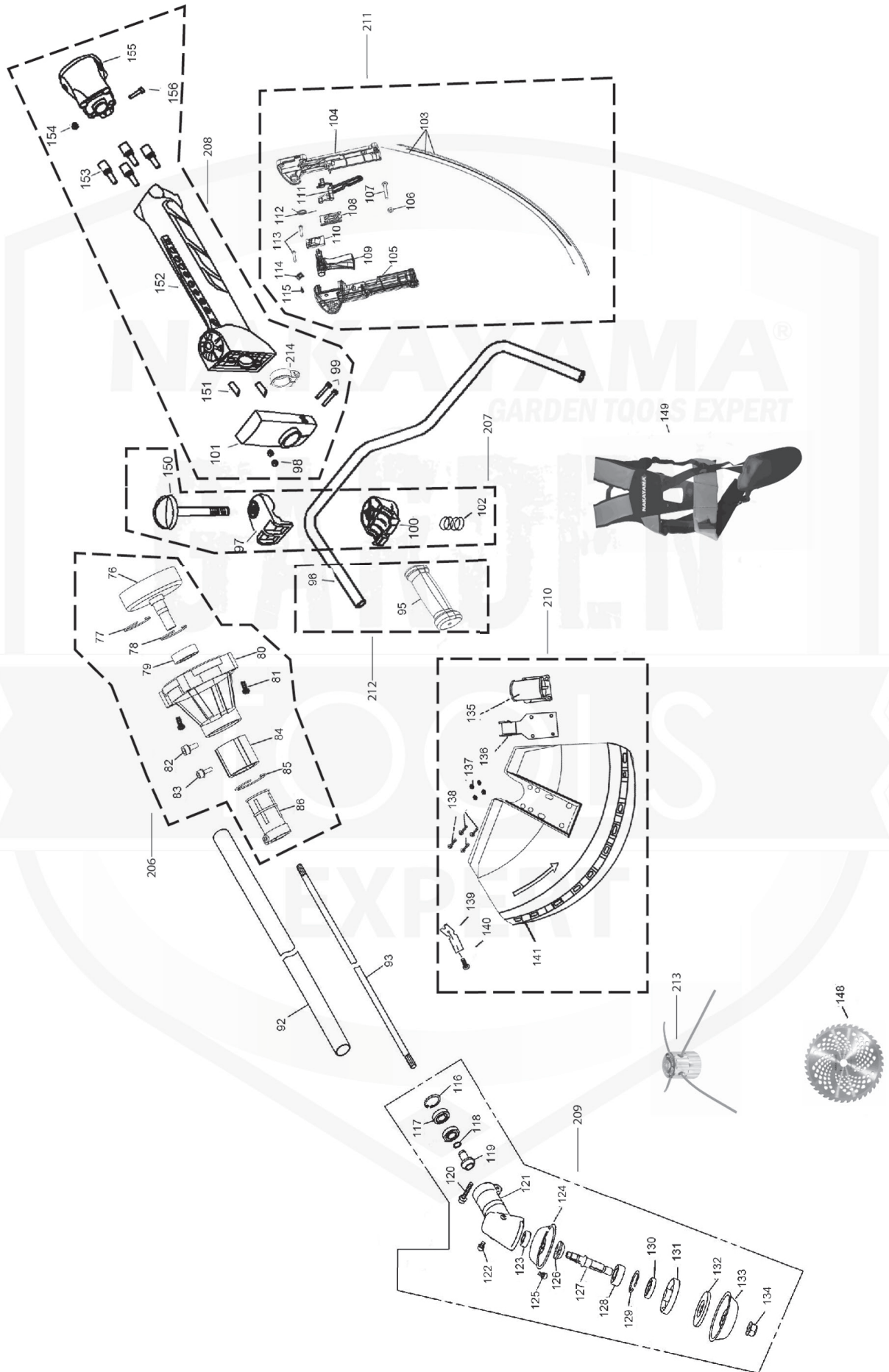
February 2020



No#	Code	Description (EN)	QTY	Notes
1	0242480001	spark plug	1	
2	0242480002	screw M5X10	2	
3	0242480003	screw M5X25	5	
4	0242480004	cylinder cover	1	
5	0242480005	washer $\Phi$ 5	1	
6	0242480006	screw M5X20	11	
7	0242480007	cylinder	1	
8	0242480008	gasket-muffler	1	
9	0242480009	muffler assy	1	
10	0242480010	muffler screw	2	
11	0242480011	WASHER-CYLINDER	1	
12	0242480012	GASKET-INTAKE	1	
13	0242480013	BOOT-INTAKE	1	
14	0242480014	GASKET-CARBURETOR	1	
15	0242480015	CARBURETOR	1	
16	0242480016	FILTER-AIR INTERNAL COVER	1	
17	0242480017	SPONGE-AIR FILTER	1	
18	0242480018	steel wire gauze	1	
19	0242480019	SCREW M5x55	2	
21	0242480021	COVER-AIR FILTER	1	
22	0242480022	SCREW	1	
22-Y	0242480022-Y	screw ST4.8*12	1	
23	0242480023	spring□small□	1	
23-Y	0242480023-Y	spring□easy starter□	1	
24	0242480024	washer	1	
24-Y	0242480024-Y	washer $\Phi$ 5	1	
25	0242480025	small pulley starter 1	1	
25-Y	0242480025-Y	small pulley starter 2	1	
26	0242480026	SHAFT-PULLEY STARTER	2	
27	0242480027	rope	1	
28	0242480028	pulley starter 1	1	
28-Y	0242480028-Y	pulley starter 2	1	
29	0242480029	SPRING-STARTER 1	1	
29-Y	0242480029-Y	SPRING-STARTER 2	1	
30	0242480030	small washer	1	
31	0242480031	HOUSING-STARTER 1	1	
31-Y	0242480031-Y	HOUSING-STARTER 2	1	
32	0242480032	HANDLE-STARTER	1	
33	0242480033	grommet rubber	1	
34	0242480034	FUEL TANK BRACKET	1	
35	0242480035	PULLEY ASSY 1	1	
35-Y	0242480035-Y	PULLEY ASSY 2	1	
36	0242480036	SEAL OIL FB12*22	1	
37	0242480037	LEFT CRANK CASE	1	
38	0242480038	GASKET-CRANK CASE	1	
39	0242480039	bearing ball 6202 KZ3(P6)	2	
40	0242480040	needle bearing ball K10X13X16	1	

No#	Code	Description (EN)	QTY	Notes
41	0242480041	CRANK SHAFT-CON-ROD ASSY	1	
42	0242480042	KEY-FLYWHEEL 3x13	1	
43	0242480043	RING -SNAP	2	
44	0242480044	PIN-PISTON	1	
45	0242480045	PISTON	1	
46	0242480046	RING-PISTON	2	
47	0242480047	PIN-CRANK CASE $\Phi$ 5X10	4	
48	0242480048	RIGHT CRANK CASE	1	
49	0242480049	screw-CRANK CASE M5X30	4	
50	0242480050	SEAL OIL FB15X30	1	
51	0242480051	FLYWHEEL	1	
52	0242480052	NUT M8	1	
53	0242480053	washer $\Phi$ 8	2	
54	0242480054	CLUTCH SUPPORT	1	
55	0242480055	SPRING CLUTCH	1	
ZC3	0242480ZC3	SET (54*2,55*1)	1	
56	0242480056	UNDEE WASHER	2	
57	0242480057	SCREW-CLUTCH	2	
58	0242480058	COVER-CRANK CASE	1	
59	0242480059	WIRE-SWITCH	1	
60	0242480060	IGNITION ASSY	1	
61	0242480061	screw M5X20	4	
62	0242480062	SCREW M5X14	1	
63	0242480063	FUEL FILTER	1	
64	0242480064	FUEL INLET	1	
65	0242480065	SUPPORT-HOSE FUEL	1	
66	0242480066	HOSE-FUEL	1	
67	0242480067	FUEL TANK	1	
68	0242480068	FUEL CAP	1	
69	0242480069	GASKET-FULE CAP	1	
70	0242480070	VENTHOLE	1	
71	0242480071	SUP-PORT-VENTHOLE	1	
72	0242480072	CAP-VENTHOLE	1	
73	0242480073	HOLDING-FUEL CAP	1	
74	0242480074	FUEL TANK SAFE BRACKET	1	
75	0242480075	SCREW	2	
157	0242480157	LOCK KNOB-AIR FILTER	1	
201	0242480201	AIR FILTER ASSY(16-17-18-19-21-157)	1	
202	0242480202	STARTER ASSY (22-Y/23-Y/24-Y/25-Y/27/28-Y/29-Y/31-Y/32).	1	
203	0242480203	CYLINDER-PISTON ASSY	1	
204	0242480204	FUEL FILTER ASSY	1	
205	0242480205	FUEL CAP ASSY	1	
206	0242480206	CLUTCH COVER ASSY	1	

PB6310 Fig.B



No#	Code	Description (EN)	QTY	Notes
76	0242480076	CLUTCH COVER	1	
77	0242480077	RING φ35	1	
78	0242480078	RING φ35	1	
79	0242480079	BEARING-BALL 6002	1	
80	0242480080	DRIVE SHAFT COVER	1	
81	0242480081	SCREW M6×30	4	
82	0242480082	SCREW M5×14	1	
83	0242480083	SCREW M6×25	1	
84	0242480084	GASKET	1	
85	0242480085	RING φ45	1	
86	0242480086	COVER-CLAMP	1	
88	0242480088	PROTECTION COVER FIXING SUPPORT	1	
92	0242480092	aluminous PIPE φ26	1	
93	0242480093	DRIVE SHAFT	1	
95	0242480095	LEFT HANDLE	1	
96	0242480096	ALUMINIUM PIPE	1	
97	0242480097	CLAMP COVER -HANDLE	1	
98	0242480098	NUT M5	2	
99	0242480099	SCREW M5X25	2	
100	0242480100	CLAMP SUPPORT-HANDLE	1	
101	0242480101	CLAMP COVER-DRIVE SHAFT	1	
102	0242480102	SPRING	1	
103	0242480103	WIRE-SWITCH ASSY	1	
104	0242480104	RIGHT HANDLE COVER	1	
105	0242480105	RIGHT HANDLE COVER	1	
106	0242480106	NUT M5	1	
107	0242480107	SCREW M5*30	1	
108	0242480108	GROMMET-SWITCH	1	
109	0242480109	TRIGGER	1	
110	0242480110	SWITCH-STOP	1	
111	0242480111	LEVER-SAFETY TRIGGER	1	
112	0242480112	SPRING-TRIGGER	1	
113	0242480113	SCREW ST4.9X19	22	
114	0242480114	PLATE-SWITCH	1	
115	0242480115	SCREW ST2.9X6	1	
116	0242480116	RING φ26	1	
117	0242480117	BEARING-BALL 6000	2	
118	0242480118	RING SNAP φ10	1	
119	0242480119	SMALL GEAR	1	
120	0242480120	SCREW M5×25	2	
121	0242480121	GEAR BOX	1	
122	0242480122	SCREW M6×10	1	
123	0242480123	BEARING-BALL 6000	1	
124	0242480124	SUPPORT-METAL BLADE	1	
125	0242480125	SCREW M5X10	3	
126	0242480126	BIG GEAR	1	
127	0242480127	GEAR SHAFT	1	
128	0242480128	BEARING-BALL 6002	1	
129	0242480129	RING φ32	1	

No#	Code	Description (EN)	QTY	Notes
130	0242480130	SEAL OIL FB20X32	1	
131	0242480131	BLADE PLATE	1	
132	0242480132	BLADE PLATE	1	
133	0242480133	FLANGE	1	
134	0242480134	NUT M10	1	
135	0242480135		1	
136	0242480136	PLATE-PROTECTOR	1	
137	0242480137	NUT	4	
138	0242480138	SCREW	4	
139	0242480139	BLADE FOR PROTECTOR	1	
140	0242480140	SCREW	1	
141	0242480141	PROTECTOR	1	
142	0242480142	SUPPORT-NYLON CUTTER	1	
143	0242480143	SPRING-NYLON CUTTER	1	
144	0242480144	ROPE SHAFT-NYLON CUTTER	1	
145	0242480145	ROPE-NYLON CUTTER	1	
146	0242480146	JACKET-NYLON CUTTER	2	
147	0242480147	COVER-NYLON CUTTER	1	
148	PB700	BLADE CARBIDE	1	ACC
149	PB100	ERGO HARNESS	1	ACC
150	0242480150	LOCK KNOB	1	
151	0242480151	RUBBER COLUMN 1	2	
152	0242480152	DAMPER-DRIVE SHAFT	1	
153	0242480153	RUBBER COLUMN 2	4	
154	0242480154	NUT M6	1	
155	0242480155	cushion socket	1	
156	0242480156	SCREW M6X30	1	
207	0242480207	STEM ASSY	1	
208	0242480208	ANTIVIBRATION ASSY	1	
209	0242480209	GEARBOX ASSY	1	
210	0242480210	PROTECTOR ASSY	1	
211	0242480211	HANDLE ASSY	1	
212	0242480212	HANDLEBAR ASSY	1	
213	PB300	ALUMINIUM NYLON HEAD	1	ACC
214	0242480214	ANTIVIBRATION CLAMP ASSY	1	